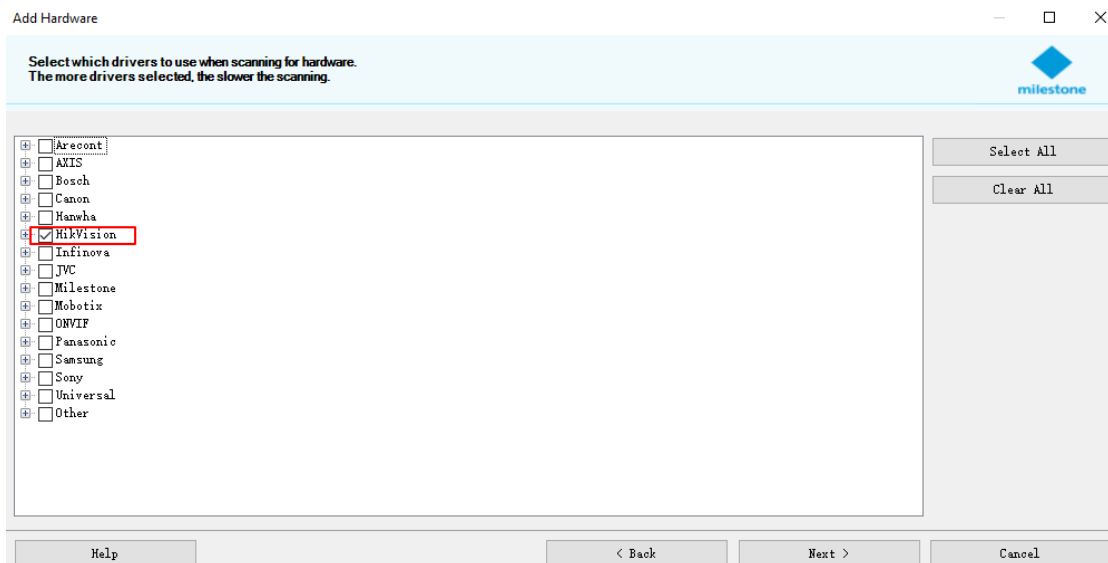


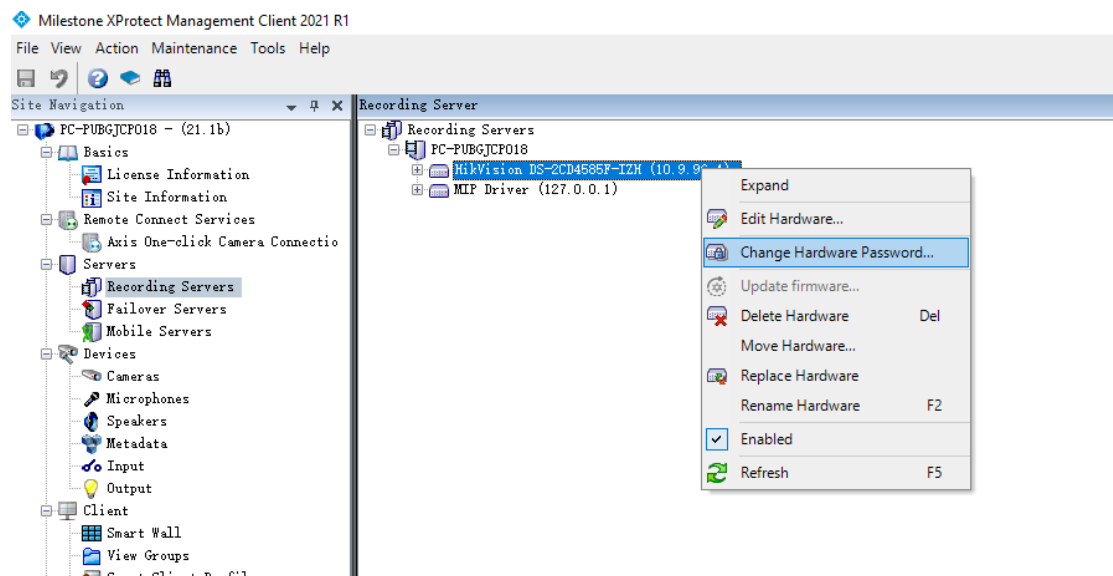
【Third-Party】 How to change camera password in Milestone

Steps:

1. Add camera by Hikvision driver in Management Client



2. Right click 'Change Hardware Password'



3. Input the password you want

Change password(s) ×


Set the new password

Generated passwords (**recommended**)
The system generates a unique password for each hardware device based on manufacturer requirements

One user-defined password

New password:

Confirm password:

 Manufacturers have different password requirements. For more information see the documentation of the manufacturers.


Selected hardware devices (1):

Name	Model	Address	Password las...	Recording se...
HikVision...	HikVision...	http://10.9...	11/8/2021...	PC-PUBGJ...

[What happens when I change passwords?](#)

4. Click 'Yes'

Proceed changing passwords? ×

 Changing password will cause the hardware to momentarily lose connection to the recording server. You can not cancel the process after proceeding from here.

If the password change is unsuccessful on any hardware, you can retry the operation for the failed hardware.

Proceed to change passwords?

5. Done

Completed

The password change succeeded.

Selected: **1**, Failed: **0**, Succeeded: **1**

Create report

Name	Model	Address	Recording server	Status
HikVision DS-2CD4585F-I...	HikVision DS-2C...	http://10.9.96.4/	PC-PUBGJCP018	Success

Close